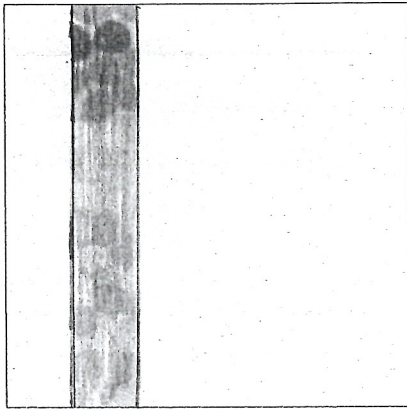
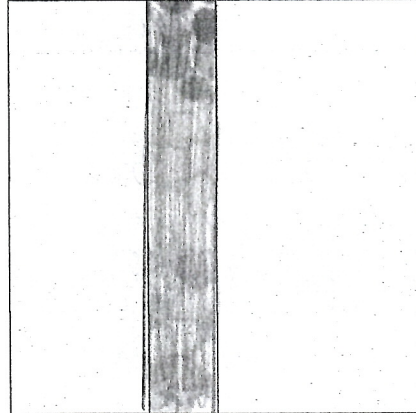


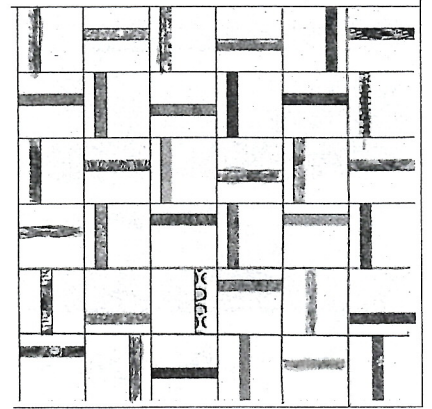
Block A:



Block B:



Quilt layout:



This is another simple, easily correctable, very useful block that makes a quick, attractive quilt. If you sew the strip in the center of the block, it also makes a great border that quickly increases the size of a quilt.

GRAY BLOCK: You can make either Block A or Block B in the gray. For the strip insert, please use bright cheerful colors – something like a strip of bright floral fabric, or make up a strip out of little scraps of bright colors. If you want to make more gray blocks, go ahead and use any of your gray fabrics for the backgrounds. Make as many as you want!

B/W PRINT BLOCK: For black-on-white print block, please use a happy, fun, bright strip of color for the insert. Use a black-on-white print to make additional blocks if you want. Make either an A or B block.

There will be two buckets to receive your name slip for each blocks – please be sure to put your slip(s) for your gray block(s) in the bucket labeled Gray, and the slip(s) for your B/W block(s) in the bucket labeled Black and White. Smiles! Get frisky!!! Have Fun!!!

BLOCK A :

Background : 1 @ 1-1/2” x 6-1/2”
1 @ 4-1/2” x 6-1/2”

Color strip: 1 @ 1-1/2” x 6-1/2”

BLOCK B :

Background: 1 @ 2-1/2” x 6-1/2”
1 @ 3-1/2” x 6-1/2”

Color strip: 1 @ 1-1/2” x 6-1/2”

Sew the three strips together, with the color strip in the middle. Press away from the center.

DON'T WORRY about the size – just turn it in as is. If it's a good day, the block will be 6-1/2” square. If the machine wasn't cooperating, it could be 6-1/4” or 6-1/8”. The winner will measure all the blocks, and then trim them all down to the size of the smallest block turned in – probably 6-1/4” or 6”. Then they will all be the same size, and easily sewn together. When you sew them together, turn every other block ¼ turn so they sew together easily without butting seams.

If questions, call or email: Sharon.A.Leahy@gmail.com Smiles! Enjoy! Get frisky!!!